



STEEL HINGED DOORS

CARRINGTON DOORS

HORTON STREET, HIGHER HILLGATE, STOCKPORT, SK1 3LR

TEL : 0161 477 3391 – FAX : 0161 477 3392

Email : sales@carringtondoors.co.uk - Web : www.carringtondoors.co.uk



Horton Street
Higher Hillgate
Stockport SK1 3LR

Tel : 0161 477 3391 – Fax : 0161 477 3392

Email : sales@carringtondoors.co.uk
Web : www.carringtondoors.co.uk

STEEL HINGED DOORS

General Details :

- . Available in single or double door sets to suit a wide range of applications.
- . Suitable for internal or external use
- . Security astragal and dogbolt hinges as standard
- . Panels are 50 mm thick, constructed from 1.2 mm zintec steel (unless otherwise specified) to BSEN 10152 1993. Zintec steel gives excellent resistance to corrosion and better paint adhesion than galvanised steel. Panels are reinforced horizontally and vertically with 1.20 mm zintec steel channels.
- . Standard core is a cellular honeycomb (unless otherwise specified), expanded and bonded within the door under pressure giving a lightweight rigid construction.
- . Frames are constructed from 1.6 mm zintec steel, press braked to give standard or special profiles, butt joined and welded corners as standard. Bolt together frames on larger doors for ease of transportation.
- . Various louvre and windows options available on most products.
- . Solid louvred and glazed combinations are available with restrictions on certain Fire and Smoke and Acoustic products.

Product Range :

- . Personnel/escape doors
- . Fire Doors
- . Acoustic Doors
- . Security Doors
- . Corrosion resistant Doors

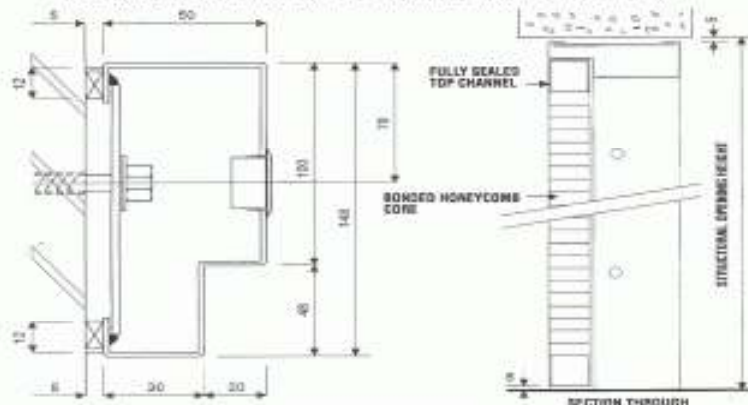
Finishes :

All doors can be provided in either a Primer or Powder coating finish. All finishes are carried out in house with a state of the art powder coat facility. A Marine Grade paint finish is supplied as standard on all Corrosion Resistant Doors in salt laden, corrosive, coastal or high chlorinated locations. An Antigraffiti finish is also available for doors situated in abusive areas.



| STANDARD SIZES | A | B | C | D | E | F | G |
|----------------|-------------|------------------|------------------|-----------------|------------------|--------------------|----------------------|
| 900 x 2100 | | | | | | | |
| 1000 x 2100 | | | | | | | |
| 1100 x 2100 | | | | | | | |
| 1740 x 2100 | | | | | | | |
| 1940 x 2100 | | | | | | | |
| 2140 x 2100 | | | | | | | |
| Smoke egress | Solid panel | 140 x 738 glazed | 480 x 738 glazed | 600 dia. glazed | 800 x 380 glazed | 480 x 1870 Louvred | 2 x 480 x 738 glazed |

WE SPECIALISE IN THE MANUFACTURE OF NON-STANDARD SIZES TO SUIT INDIVIDUAL OPENINGS



TYPICAL PLAN (Double Door shown)

Standard Ironmongery has been selected from the world leaders for security ironmongery and Briton escape ironmongery which complies with BSEN 1125 and 179. Specified or free issue hardware can usually be accommodated.